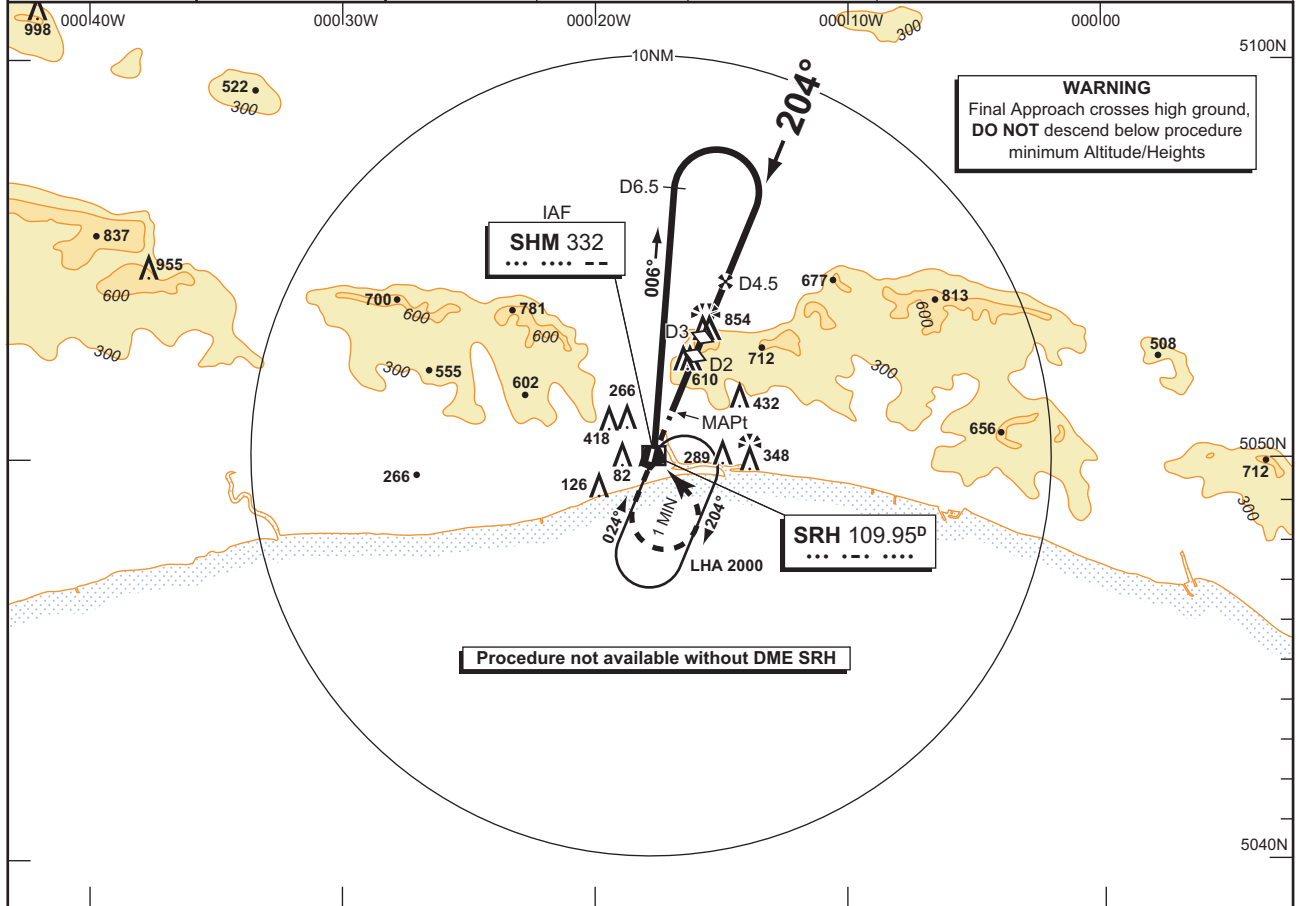
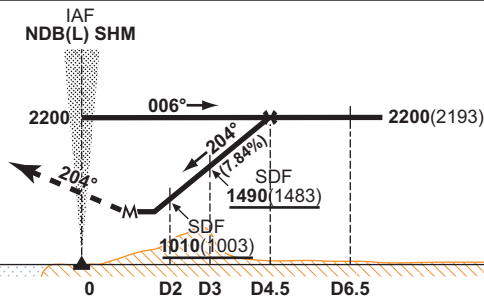


				EGKA CAT A,B				SHOREHAM NDB(L) /DME RWY 20 SHM 332/SRH 109.95	
AD ELEV 7FT	THR ELEV 7FT	TRANSITION ALT 3000	VAR 2°W		ATIS 125.300		APPROACH 123.150	TOWER 123.150, 125.400	
MSA 25NM NDB(L) SHM		MSA 15NM NDB(L) SHM							



MAPt 1 (M) SRH DME 1 inbound
Climb straight ahead to **1500(1493)**, then climbing turn left to return to NDB(L) SHM at **2200** or as directed.



DME SRH zero ranged to THR RWY 20.

RECOMMENDED PROFILE		RATE OF DESCENT		OCA (OCH)		VM(C) OCA (OCH AAL)	
Gradient 7.84%, 476FT/NM				PROCEDURE		TOTAL AREA	South of RWY 07/25
DME SRH	ALT/HGT	G/S KT	FT/MIN				
4	1960 (1953)	160	1270	A	800 (793)	800 (793)	600 (593)
3	1490 (1483)	140	1110	B	800 (793)		800 (793)
2	1010 (1003)	120	950				
1	530 (523)	100	790				
		80	630				

- NOTES**
- 1 Subject to ATC approval aircraft arriving from Sector Northeast may descend to **2000** after passing SRH DME 15 inbound to NDB(L) SHM.
 - 2 Steep Final Approach Descent Gradient 4.48°, matched to PAPI angle of 4.5°.

INTENTIONALLY BLANK