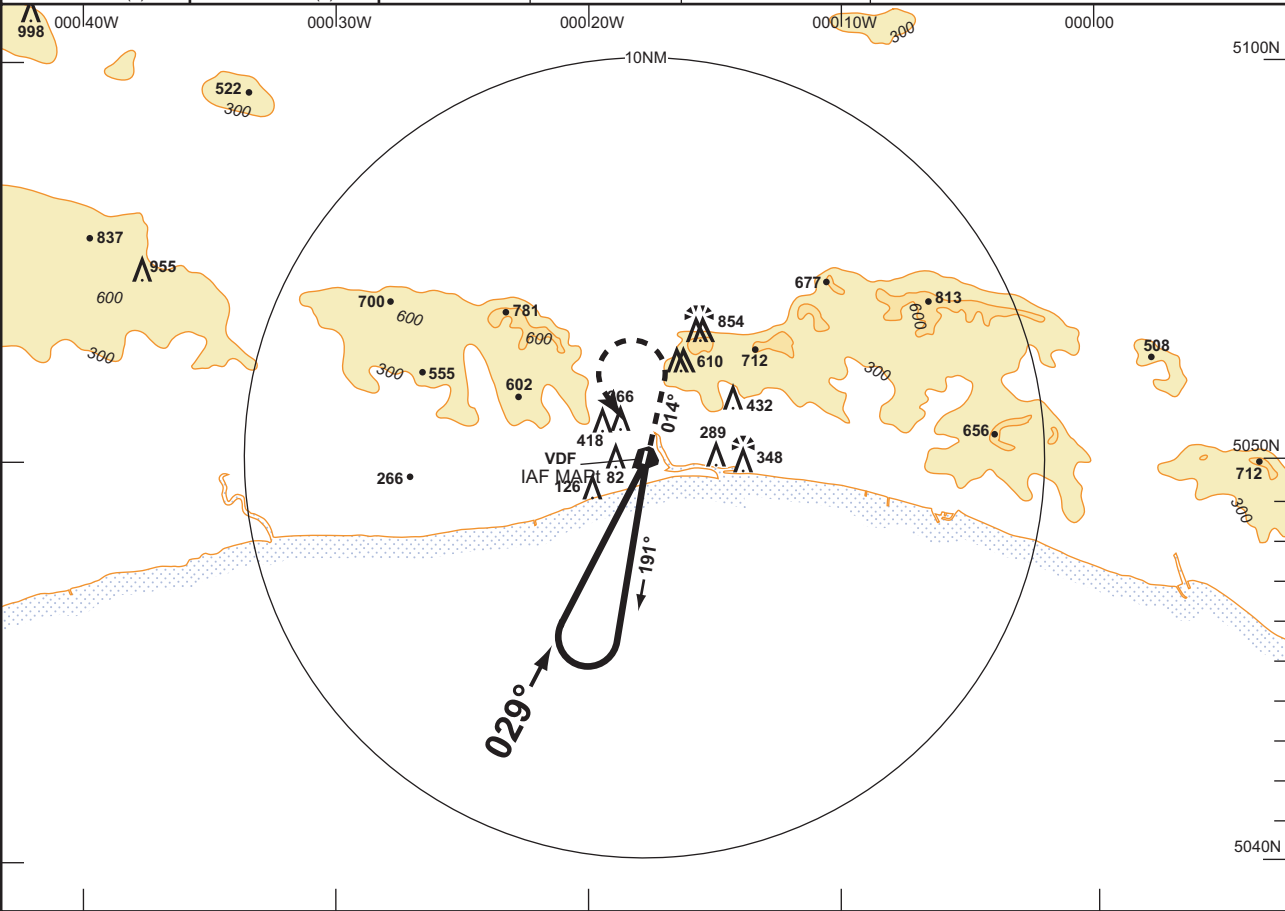
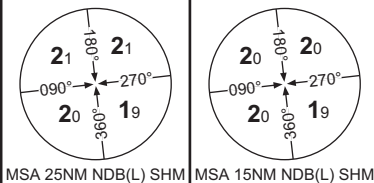


SHOREHAM
VDF RWY 02
VDF 123.150

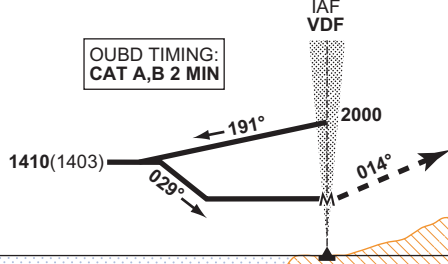
EGKA
CAT A,B

AD ELEV 7FT	THR ELEV 7FT	TRANSITION ALT 3000	VAR 2°W
----------------	-----------------	------------------------	------------

ATIS 125.300	APPROACH 123.150	TOWER 123.150, 125.400
-----------------	---------------------	---------------------------



OUBD TIMING:
 CAT A,B 2 MIN



MAPt (M) VDF overhead

Climb on track 014°M to 1500(1493), then climbing turn left to return to VDF overhead at 2000 or as directed.
WARNING High ground in the Missed Approach Segment, aircraft must maintain minimum 2.5% climb gradient (152FT/NM).
Do not delay start of MAP.

	OCA (OCH)		VM(C) OCA (OCH AAL)	
	PROCEDURE		TOTAL AREA	South of RWY 07/25
A	830 (823)		800 (793)	600 (593)
B	830 (823)		1000 (993)	800 (793)

NOTE Nominal FAT offset 5° west of RWY C/L.